



# 2021 Multimodal Transportation Project List

## ST LOUIS REGIONAL FREIGHTWAY

### Advanced to Construction



**Merchants Bridge (TRRA) Replacement over the Mississippi River (MO-IL)**  
Replacement of Terminal Railroad Association of St. Louis 130-year old rail bridge

*Freightway's #1 Priority*



*Funded: Summer 2018*  
*Estimated Cost: \$222 mil*

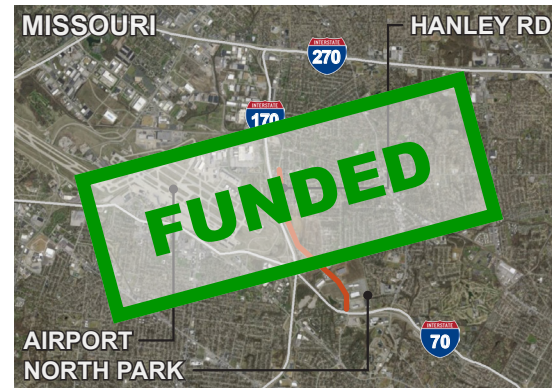


**Union Pacific Railroad Lenox Tower Replacement (IL)**

Remove Lenox Rail Tower in Mitchell, Illinois in order to centralize dispatching in Omaha, Nebraska



*Construction Completed*  
*Estimated Cost: \$9 mil*



**North Park Access Improvements (MO)**

Safety and capacity improvements along Hanley Road from I-70 to Madison Avenue



*Funded in 2018*  
*Estimated Cost: \$3 mil*



**Earth City Access Improvements (MO)**

(A) St. Charles Rock Road preservation of 1.3-mile corridor  
(B) Arterial roadway pavement repairs in Earth City



*Construction Nearing Completion*  
*Estimated Cost: \$4 mil*



**J.S. McDonnell Connector Access Improvements (MO)**

Roadway improvements to enhance truck traffic movements and replace deteriorated rail crossing



*Construction Funding Approved 2019*  
*Estimated Cost: \$20.7 mil*

### Advanced to Construction



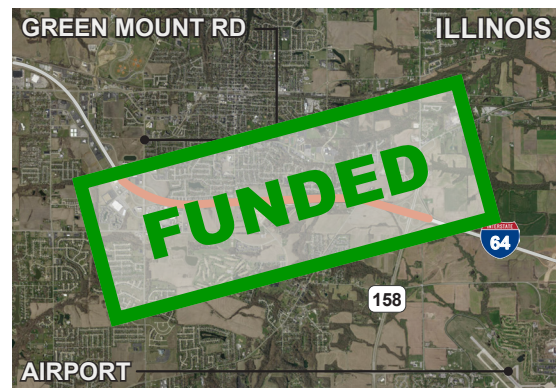
**I-255 / Davis Street Ferry Road Interchange (IL)**

New interchange and connecting roadways to serve emerging industrial area near Union Pacific Dupu Intermodal Yard including future grade separation over five rail tracks

*Highest Priority Project*



*Funded: Summer 2019*  
*Estimated Cost: \$42 mil*



**I-64 Improvements from Green Mount Road to Illinois Route 158 (Air Mobility Drive) (IL)**

Expansion of I-64 to six lanes as well as other safety and capacity improvements



*Funded: Summer 2019*  
*Estimated Cost: \$32 mil*



**Illinois Route 158 (Air Mobility Drive) Expansion from Route 161 to Route 177 (IL)**

One-mile extension of two lanes along a growth corridor near I-64 and MidAmerica St. Louis Airport



*Funded in 2019*  
*Estimated Cost: \$20 mil*

### Partially Programmed for Construction



**I-70 Improvements from Wentzville to Stan Musial Veterans Memorial Bridge (MO)**

(A) I-70 Outer Roads from Fairgrounds Road to Cave Springs Road (MO)\* (*Partially Funded \$34.5 mil*)  
(B) Improvements to the I-70 Curve and Norfolk Southern Railroad Bridge (MO)\*  
(C) Improvements to I-70/I-64 Interchange (MO)\*

*Highest Priority Project*



*Estimated Cost: \$650 mil*  
*\* Identified as high priority sections 2021*



**I-270 Improvements from I-70 (MO) to Illinois Route 157 (MO-IL)**

(A) I-70 on the West to West of Riverview Drive (MO) (*Partially Funded \$278 mil in 2018*)  
(B) Chain of Rocks Bridge Replacement (MO-IL) (*\$223 mil Funded in 2018*)  
(C) Mississippi River to West of Illinois Route 203 (IL) (*\$84.5 mil Funded in 2019*)

*Highest Priority Project*



*Estimated Cost: \$1.2 bil*





# 2021 Multimodal Transportation Project List

## ST LOUIS REGIONAL FREIGHTWAY

### Partially Programmed for Construction



#### Illinois Route 3 Access Improvements (IL)

- (A) Illinois Route 3 Relocation from River Park Drive to Monsanto Avenue *(Funded)*  
(B) Illinois Route 3 railroad grade separation bridge over Alton & Southern railroad *(Partially Funded)*

*Highest Priority Project*



Estimated Cost: \$121.4 mil



#### North Riverfront Commerce Corridor Improvements (MO)

- (A) Hall Street and Riverview Drive improvements *(Partially Funded)*  
(B) Branch Street improvements  
(C) I-70 westbound off-ramp to North Broadway relocation *(Complete)*

*Highest Priority Project*



Estimated Cost: \$33.7 mil  
Unfunded: \$28 mil



#### St. Louis Lambert International Airport North Cargo Improvements (MO)

- (A) Banshee Road reconstruction  
(B) McDonnell Boulevard / Airport Road intersection reconstruction *(Funded)*  
(C) Taxiway V connector *(Complete)*



Estimated Cost: \$18.2 mil  
Unfunded: \$11 mil

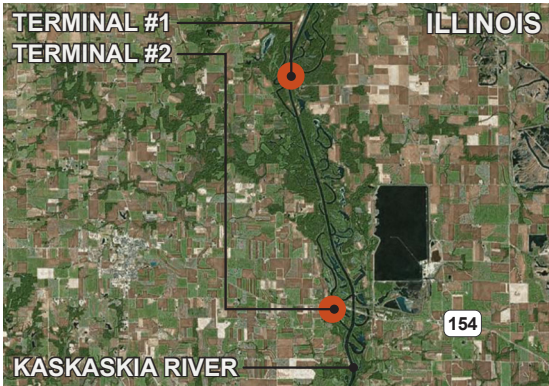


#### America's Central Port Intermodal Improvements (IL)

- (A) Granite City Harbor track revitalization  
(B) Granite City Harbor general cargo dock revitalization *(Complete)*  
(C) Red Dock rail expansion  
(D) New port entrance at Illinois Route 3 *(Funded)*



Estimated Cost: \$21.3 mil  
Unfunded: \$12.9 mil



#### Kaskaskia Regional Port District Improvements (IL)

- (A) Terminal #1 second rail loop track and lead track rail upgrades  
(B) Terminal #2 2nd entrance & 3rd dock  
(C) Port Development at Fayetteville



Estimated Cost: \$40 mil

### Concept Development or Planning



#### Mississippi River Port Development Projects (MO)

- (A) Crystal City Port Development with access roadway  
(B) City of St. Louis south riverfront site  
(C) St. Louis County Port development north/south sites



Estimated Cost: \$37.5 mil



#### I-255 / Fish Lake (Ramsey Road) Interchange (IL)

- New interchange to provide additional access to the Union Pacific Dupo Intermodal Yard



Estimated Cost: \$27 mil



#### St. Louis Lambert International Airport Access Improvements (MO)

- (A) Cargo City access analysis  
(B) Fee Fee Road bridge improvement  
(C) Gist Road upgrade



Estimated Cost: \$30.3 mil



#### MidAmerica St. Louis Airport Distribution Improvements (IL)

- New two-mile rail spur from Norfolk Southern mainline to enable freight rail access for industry on the eastern side of airport



Estimated Cost: \$45 mil



#### I-55 Improvements from Route Z to U.S. Route 67 (MO)

- Pavement and bridge rehabilitation, increased capacity by expanding to a six-lane highway for approximately six miles from Route Z to U.S. Route 67, and interchange improvements



Estimated Cost: \$213 mil



#### Terminal Railroad Association of St. Louis (TRRA) Tunnel-Arch Riverfront Dewatering (MO)

- Drill dewatering wells and pump incoming flood water at a rate that would allow for train traffic to continue operation in a flood that reached up to 45 feet on the St. Louis Gage.



Estimated Cost: \$8 mil