



# 2017 Multimodal Transportation Project List

## Improving the Multimodal Transportation Network Projects

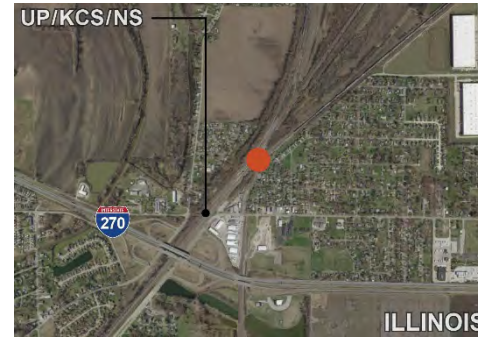


\* **Merchants (TRRA) Bridge Replacement over the Mississippi River (MO-IL)**  
Terminal Railroad Association of St. Louis' 127 Year Old Railroad Bridge

*Freightway's #1 Priority*



\* **I-270 Improvements from Lindbergh Boulevard to Illinois Route 111 (MO-IL)**  
-Mississippi River Chain of Rocks Bridge Replacement  
-Widening from IL 111 to Lilac Avenue  
-Improvements from Lilac Avenue to Lindbergh Blvd.



**Union Pacific Railroad Lenox Tower Replacement (IL)**  
-Replace Lenox Rail Tower and Track Switches in Mitchell, IL



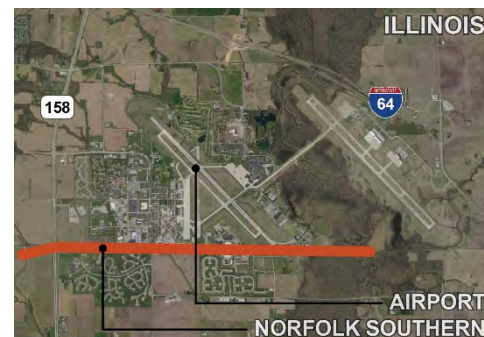
**St. Louis Lambert International Airport North Cargo Improvements (MO)**  
-Norfolk Southern Spur  
-Banshee Rd. Reconstruction  
-McDonnell Blvd./Airport Rd. Intersection  
-Taxiway V Connector to Cargo Ramp



**I-70 Improvements from I-64 Interchange (MO) to the Stan Musial Veterans Memorial Bridge**  
-40-mile corridor from Wentzville, MO to the Mississippi River (MO)



**America's Central Port Improvements (IL)**  
-Granite City Harbor  
-Improvements (Track/Dock)  
-UPRR/KCS Direct Connect through A&K Yard  
-New Port Industrial Entrance



**MidAmerica St. Louis Airport Distribution Improvements (IL)**  
-Norfolk Southern Railroad Spur



**J.S. McDonnell Connector Access Improvements (MO)**  
-Roadway and Railroad Improvements in Berkeley, MO



**I-64 Improvements from Green Mount Road to Illinois Route 158 (Air Mobility Drive) (IL)**  
-Widening I-64 to 6 Lanes



**Kaskaskia Regional Port District Improvements (IL)**  
-Outbound Conveyor Upgrade and Retrofit



# 2017 Multimodal Transportation Project List

## Improving Access to the Multimodal Transportation Network Projects



\* **North Riverfront Commerce Corridor Improvements (MO)**  
 -Hall Street  
 -Branch Street  
 -Municipal River Terminal Rail Access



\* **Illinois Route 3 Access Improvements (IL)**  
 -Widening (E. StL to Sauget)  
 -Falling Springs Road A&S Railroad Bypass



**I-255/Davis Street Ferry Road Interchange (IL)**  
 -New Interchange



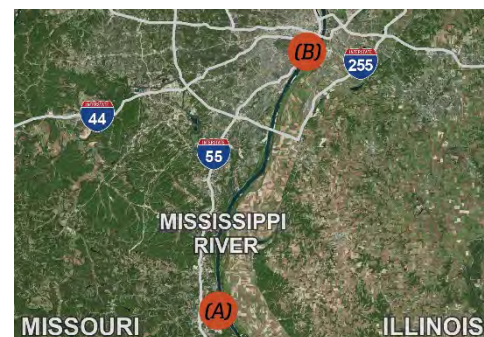
**I-255/Fish Lake (Ramsey Road) Interchange (IL)**  
 -New Interchange



**I-70 St. Louis County Improvements from Natural Bridge Road to Hanley Road (MO)**  
 -Includes I-170 Interchange Improvements



**St. Louis Lambert International Airport Access Improvements (MO)**  
 -Cargo City Access Improvement  
 -Fee Fee Road Bridge Improvement  
 -Gist Road Improvements



**Mississippi River Port Development Projects (MO)**  
 -Crystal City Port & New Access Rd.  
 -St. Louis County North/South Sites  
 -City of St. Louis South Riverfront Site Preparation



**Illinois Route 158 (Air Mobility Drive) Expansion from Route 161 to Route 177 (IL)**  
 -Extension from Scott Air Force Base Access to the South



**North Park Access Improvements (MO)**  
 -Hanley Road Relocation and Reconstruction Projects



**Earth City Access Improvements (MO)**  
 -St. Charles Rock Road Improvements (MO 180)