



2019 Multimodal Transportation Project List

ST LOUIS REGIONAL FREIGHTWAY

Advanced to Construction



Merchants Bridge (TRRA) Replacement over the Mississippi River (MO-IL)

Replacement of Terminal Railroad Association 130-year old rail bridge

Freightway's #1 Priority

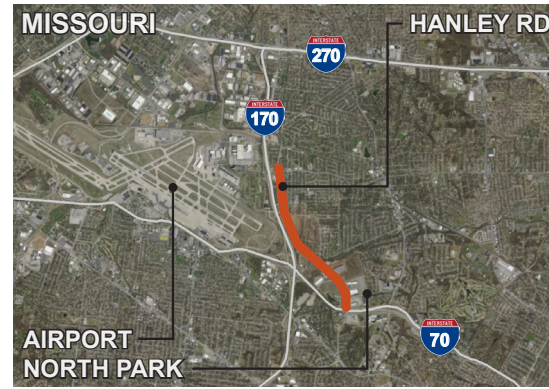


I-270 Improvements from I-70 (MO) to Illinois Route 111 (MO-IL)

(B) Mississippi River Chain of Rocks bridge replacement *(Funded)*

(C) I-270 / Illinois Route 111 interchange improvements *(Funded)*

Highest Priority Project



North Park Access Improvements (MO)

Safety and capacity improvements along Hanley Road from I-70 to Madison Avenue *(Funded)*



Earth City Access Improvements (MO)

(A) St. Charles Rock Road preservation of 1.3-mile corridor *(Funded)*

(B) Arterial roadway pavement repairs in Earth City area *(Funded)*



J.S. McDonnell Connector Access Improvements (MO)

Roadway improvements to enhance truck traffic movements and replace deteriorated rail crossing *(Funded)*

Partially Programmed for Construction



North Riverfront Commerce Corridor Improvements (MO)

(A) Hall Street and Riverview Drive improvements *(Partially Funded)*

(B) Branch Street improvements

(C) I-70 westbound off-ramp to North Broadway relocation *(Complete)*

Highest Priority Project



Illinois Route 3 Access Improvements (IL)

(A) Illinois Route 3 relocation from River Park Drive to Monsanto Avenue

(B) Falling Springs Road / Illinois Route 3 railroad bypass *(Partially Funded)*

Highest Priority Project



Union Pacific Railroad Lenox Tower Replacement and Track Realignment (IL)

(A) Remove Lenox Rail Tower in Mitchell, Illinois in order to centralize dispatching in Omaha, Nebraska *(Partially Funded)*

(B) Realign track through interlock



St. Louis Lambert International Airport North Cargo Improvements (MO)

(A) Norfolk Southern railroad spur

(B) Banshee Road reconstruction

(C) McDonnell Boulevard / Airport Road intersection reconstruction

(D) Taxiway V connector *(Complete)*



America's Central Port Improvements (IL)

(A) Granite City Harbor track revitalization

(B) Granite City Harbor general cargo dock revitalization *(Funded)*

(C) Union Pacific / Kansas City Southern connection through A&K yard

(D) New port entrance at IL-3 *(Funded)*



2019 Multimodal Transportation Project List

ST LOUIS REGIONAL FREIGHTWAY

Concept Development or Planning



I-270 Improvements from I-70 (MO) to Illinois Route 111 (MO-IL)

- (A) Improvements and some widening from I-70 to Mississippi River
- (C) Widening from Mississippi River to Illinois Route 111

Highest Priority Project



I-70 Improvements from Warrenton to Stan Musial Veterans Memorial Bridge (MO)

- (A) Improvements from Wentzville to Stan Musial Veterans Memorial Bridge (40 miles)
- (B) Expansion to six lanes from Wentzville to Warrenton (20 miles)

Highest Priority Project



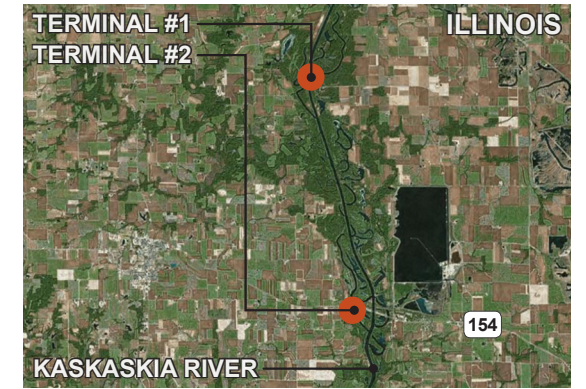
MidAmerica St. Louis Airport Distribution Improvements (IL)

- New two-mile rail spur from Norfolk Southern mainline to enable freight rail access for industry on the eastern side of airport



I-64 Improvements from Green Mount Road to Illinois Route 158 (Air Mobility Drive) (IL)

- Expansion of I-64 to six lanes as well as other safety and capacity improvements



Kaskaskia Regional Port District Improvements (IL)

- (A) Fuel pipeline feasibility study
- (B) Outbound conveyor upgrade
- (C) Container-on-barge capacity improvements
- (D) Port secondary access



I-255 / Davis Street Ferry Road Interchange (IL)

- New interchange and connecting roadways to serve emerging industrial area near Union Pacific Dupo Intermodal Yard including future grade separation over five rail tracks



I-255 / Fish Lake (Ramsey Road) Interchange (IL)

- New interchange to provide additional access to the Union Pacific Dupo Intermodal Yard



St. Louis Lambert International Airport Access Improvements (MO)

- (A) Cargo City access analysis
- (B) Fee Fee Road bridge improvement
- (C) Gist Road upgrade



Mississippi River Port Development Projects (MO)

- (A) Crystal City Port development with access roadway
- (B) City of St. Louis south riverfront site preparation
- (C) St. Louis County Port development north/south sites



Illinois Route 158 (Air Mobility Drive) Expansion from Route 161 to Route 177 (IL)

- One-mile extension of two lanes along a growth corridor near I-64 and MidAmerica St. Louis Airport