



2020 Multimodal Transportation Project List

ST LOUIS REGIONAL FREIGHTWAY

Advanced to Construction



Merchants Bridge (TRRA) Replacement over the Mississippi River (MO-IL)
Replacement of Terminal Railroad Association of St. Louis 130-year old rail bridge

Freightway's #1 Priority



Funded: Summer 2018
Estimated Cost: \$222 mil



I-270 Improvements from I-70 (MO) to Illinois Route 157 (MO-IL)
(B) Chain of Rocks Bridge Replacement
(C) I-270/IL-111 Interchange Reconstruction

Highest Priority Project



Funded: Spring 2018
B) \$211.6 mil (C) \$19 mil



North Park Access Improvements (MO)
Safety and capacity improvements along Hanley Road from I-70 to Madison Avenue



Funded in 2018
Estimated Cost: \$3 mil



Earth City Access Improvements (MO)
(A) St. Charles Rock Road preservation of 1.3-mile corridor
(B) Arterial roadway pavement repairs in Earth City



Construction Nearing Completion
Estimated Cost: \$4 mil



J.S. McDonnell Connector Access Improvements (MO)

Roadway improvements to enhance truck traffic movements and replace deteriorated rail crossing



Construction Funding Approved 2019
Estimated Cost: \$20.7 mil

Advanced to Construction



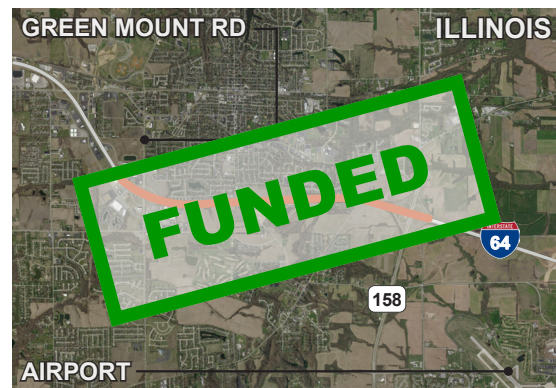
I-255 / Davis Street Ferry Road Interchange (IL)

New interchange and connecting roadways to serve emerging industrial area near Union Pacific Dupo Intermodal Yard including future grade separation over five rail tracks

Highest Priority Project



Funded: Summer 2019
Estimated Cost: \$59 mil



I-64 Improvements from Green Mount Road to Illinois Route 158 (Air Mobility Drive) (IL)

Expansion of I-64 to six lanes as well as other safety and capacity improvements



Funded: Summer 2019
Estimated Cost: \$32 mil



Union Pacific Railroad Lenox Tower Replacement (IL)

Remove Lenox Rail Tower in Mitchell, Illinois in order to centralize dispatching in Omaha, Nebraska



Funded: Spring 2018 and 2019
Estimated Cost: \$9 mil



North Riverfront Commerce Corridor Improvements (MO)

(A) Hall Street and Riverview Drive improvements (*Partially Funded*)
(B) Branch Street improvements
(C) I-70 westbound off-ramp to North Broadway relocation (*Complete*)

Highest Priority Project



Estimated Cost: \$33.9 mil
Unfunded: \$28 mil



I-270 Improvements from I-70 (MO) to Illinois Route 157 (MO-IL)

(A) Improvements and some widening from I-70 to Mississippi River (*partially funded \$250 mil*) (MO)
(C) Widening from Mississippi River to Route 157 (*IL-111 Interchange Funded*)

Highest Priority Project



Estimated Cost: \$1.2 bil
Unfunded: (A) \$450 mil (C) \$268

October 2019



2020 Multimodal Transportation Project List

ST LOUIS REGIONAL FREIGHTWAY

Partially Programmed for Construction



Illinois Route 3 Access Improvements (IL)

- (A) Illinois Route 3 relocation from River Park Drive to Monsanto Avenue
 - (B) Falling Springs Road / Illinois Route 3 railroad bypass *(Partially Funded)*
- Highest Priority Project**

Estimated Cost: \$147 - \$192 mil
Unfunded: \$135 - \$180 mil



- #### America's Central Port Improvements (IL)
- (A) Granite City Harbor track revitalization
 - (B) Granite City Harbor general cargo dock revitalization *(Funded)*
 - (C) Union Pacific / Kansas City Southern connection through A&K yard
 - (D) New port entrance at IL-3 *(Funded)*

Estimated Cost: \$22.5 mil
Unfunded: \$12.5 mil



- #### St. Louis Lambert International Airport North Cargo Improvements (MO)
- (A) Banshee Road reconstruction
 - (B) McDonnell Boulevard / Airport Road intersection reconstruction
 - (C) Taxiway V connector *(Complete)*

Estimated Cost: \$18.2 mil
Unfunded: \$12.1 mil

Concept Development or Planning



- #### I-70 Improvements from Warrenton to Stan Musial Veterans Memorial Bridge (MO)
- (A) Improvements from Wentzville to Stan Musial Memorial Bridge (40 miles)
 - (B) Expansion to six lanes from Wentzville to Warrenton (20 miles)
- Highest Priority Project**

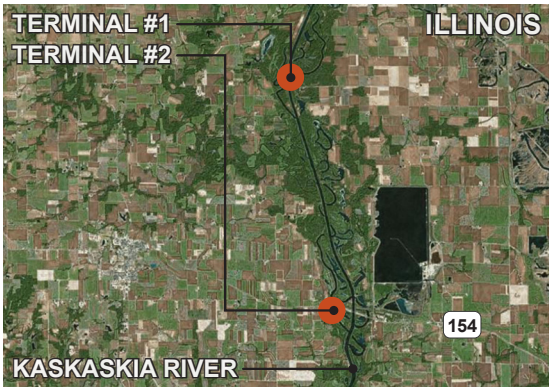
Estimated Cost: \$650 mil



- #### Mississippi River Port Development Projects (MO)
- (A) Crystal City Port development with access roadway
 - (B) City of St. Louis south riverfront site
 - (C) St. Louis County Port development north/south sites

Estimated Cost: \$17.5 mil

Concept Development or Planning



Kaskaskia Regional Port District Improvements (IL)

- (A) Terminal #1 second rail loop track and lead track rail upgrades
- (B) Terminal #2 2nd entrance & 3rd dock
- (C) Port Development at Fayetteville

Estimated Cost: \$11.8 mil



I-255 / Fish Lake (Ramsey Road) Interchange (IL)

- New interchange to provide additional access to the Union Pacific Dupo Intermodal Yard

Estimated Cost: \$27 mil



St. Louis Lambert International Airport Access Improvements (MO)

- (A) Cargo City access analysis
- (B) Fee Fee Road bridge improvement
- (C) Gist Road upgrade

Estimated Cost: \$30.25 mil



MidAmerica St. Louis Airport Distribution Improvements (IL)

- New two-mile rail spur from Norfolk Southern mainline to enable freight rail access for industry on the eastern side of airport

Estimated Cost: \$45 mil



Illinois Route 158 (Air Mobility Drive) Expansion from Route 161 to Route 177 (IL)

- One-mile extension of two lanes along a growth corridor near I-64 and MidAmerica St. Louis Airport

Estimated Cost: \$20 mil