



2021 Multimodal Transportation Project List

ST LOUIS REGIONAL FREIGHTWAY

Advanced to Construction



Merchants Bridge (TRRA) Replacement over the Mississippi River (MO-IL)
Replacement of Terminal Railroad Association of St. Louis 130-year old rail bridge

Freightway's #1 Priority



Funded: Summer 2018
Estimated Cost: \$222 mil



Union Pacific Railroad Lenox Tower Replacement (IL)

Remove Lenox Rail Tower in Mitchell, Illinois in order to centralize dispatching in Omaha, Nebraska



Construction Completed
Estimated Cost: \$9 mil



North Park Access Improvements (MO)

Safety and capacity improvements along Hanley Road from I-70 to Madison Avenue



Funded in 2018
Estimated Cost: \$3 mil



Earth City Access Improvements (MO)

(A) St. Charles Rock Road preservation of 1.3-mile corridor
(B) Arterial roadway pavement repairs in Earth City



Construction Nearing Completion
Estimated Cost: \$4 mil



J.S. McDonnell Connector Access Improvements (MO)

Roadway improvements to enhance truck traffic movements and replace deteriorated rail crossing



Construction Funding Approved 2019
Estimated Cost: \$20.7 mil

Advanced to Construction



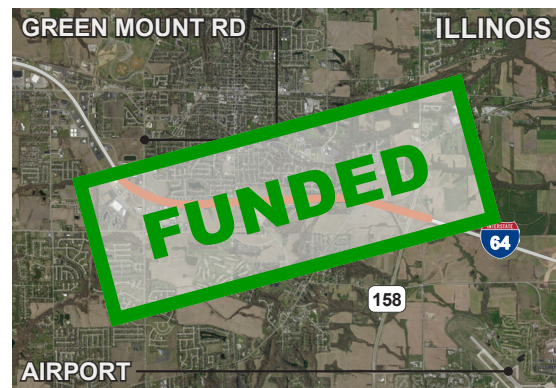
I-255 / Davis Street Ferry Road Interchange (IL)

New interchange and connecting roadways to serve emerging industrial area near Union Pacific Dupu Intermodal Yard including future grade separation over five rail tracks

Highest Priority Project



Funded: Summer 2019
Estimated Cost: \$42 mil



I-64 Improvements from Green Mount Road to Illinois Route 158 (Air Mobility Drive) (IL)

Expansion of I-64 to six lanes as well as other safety and capacity improvements



Funded: Summer 2019
Estimated Cost: \$32 mil



Illinois Route 158 (Air Mobility Drive) Expansion from Route 161 to Route 177 (IL)

One-mile extension of two lanes along a growth corridor near I-64 and MidAmerica St. Louis Airport



Funded in 2019
Estimated Cost: \$20 mil

Partially Programmed for Construction



I-70 Improvements from Wentzville to Stan Musial Veterans Memorial Bridge (MO)

(A) I-70 Outer Roads from Fairgrounds Road to Cave Springs Road (MO)* *(Funded \$62 mil)*
(B) I-70/Riverview Drive Interchange reconstruction (MO) *(Funded)*
(C) Improvements to the I-70 Curve and Norfolk Southern Railroad Bridge (MO)* *(Not Funded)*
(D) Improvements to I-70/I-64 Interchange (MO)* *(Concept Development Phase)*
(E) New interchange/expansion improvements—David Hoekel Pkwy, Wentzville south, Lake St. Louis Blvd south and Route K *(Funded)*

Highest Priority Project



Estimated Cost: \$650 mil
** Identified as high priority sections 2021*



I-270 Improvements from I-70 (MO) to Illinois Route 157 (MO-IL)

(A) I-70 to Mississippi River (MO) *(Partially Funded \$278 mil in 2018)*
(B) Chain of Rocks Bridge Replacement (MO-IL) *(\$223 mil Funded in 2018)*
(C) Mississippi River to West of Illinois Route 157 (IL) *(Partially Funded \$84.5 mil in 2019)*

Highest Priority Project



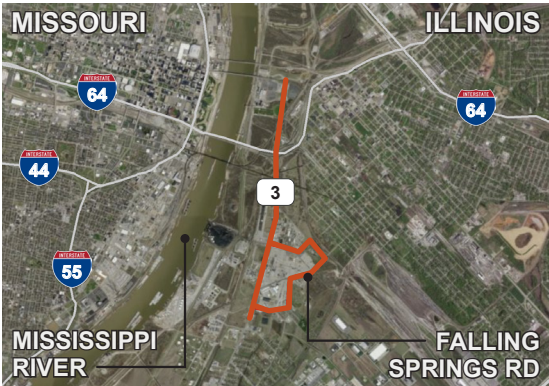
Estimated Cost: \$1.2 bil



2021 Multimodal Transportation Project List

ST LOUIS REGIONAL FREIGHTWAY

Partially Programmed for Construction



Illinois Route 3 Access Improvements (IL)

- (A) Illinois Route 3 Relocation from River Park Dr to Monsanto Ave *(Funded 2019)*
- (B) Illinois Route 3 railroad grade separation bridge over Alton & Southern railroad *(Partially Funded 2019)*

Highest Priority Project



North Riverfront Commerce Corridor Improvements (MO)

- (A) Hall Street and Riverview Drive improvements *(Partially Funded)*
- (B) Branch Street improvements
- (C) I-70 westbound off-ramp to North Broadway relocation *(Complete)*

Highest Priority Project



Estimated Cost: \$33.7 mil
Unfunded: \$28 mil



St. Louis Lambert International Airport North Cargo Improvements (MO)

- (A) Banshee Road reconstruction *(Not Funded)*
- (B) Taxiway V connector *(Complete)*



Estimated Cost: \$18.2 mil
Unfunded: \$11 mil

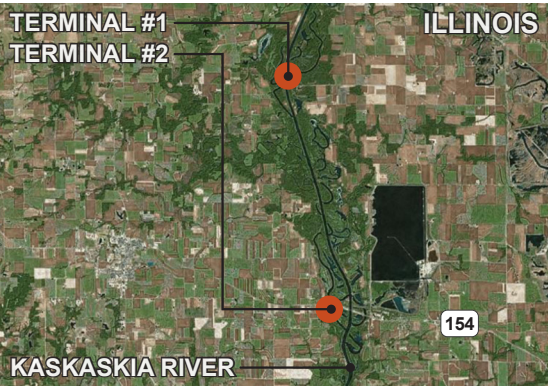


America's Central Port Intermodal Improvements (IL)

- (A) Granite City Harbor track revitalization *(Not Funded)*
- (B) Red Dock rail expansion *(Not Funded)*
- (C) New port entrance at Illinois Route 3 *(Funded 2018)*



Estimated Cost: \$21.3 mil
Unfunded: \$12.9 mil



Kaskaskia Regional Port District Improvements (IL)

- (A) Terminal #1 second rail loop track and lead track rail upgrades
- (B) Terminal #2 2nd entrance & 3rd dock
- (C) Port Development at Fayetteville



Estimated Cost: \$40 mil

Concept Development or Planning



Mississippi River Port Development Projects (MO)

- (A) Crystal City Port Development with access roadway
- (B) City of St. Louis south riverfront site
- (C) St. Louis County Port development north/south sites



I-255 / Fish Lake (Ramsey Road) Interchange (IL)

- New interchange to provide additional access to the Union Pacific Dupo Intermodal Yard



Estimated Cost: \$27 mil



St. Louis Lambert International Airport Access Improvements (MO)

- (A) Cargo City access analysis
- (B) Fee Fee Road bridge improvement
- (C) Gist Road upgrade



Estimated Cost: \$30.3 mil



MidAmerica St. Louis Airport Distribution Improvements (IL)

- New two-mile rail spur from Norfolk Southern mainline to enable freight rail access for industry on the eastern side of airport



Estimated Cost: \$45 mil



I-55 Improvements from Route Z to U.S. Route 67 (MO)

- Pavement and bridge rehabilitation, increased capacity by expanding to a six-lane highway for approximately six miles from Route Z to U.S. Route 67, and interchange improvements



Estimated Cost: \$213 mil



Terminal Railroad Association of St. Louis (TRRA) Tunnel-Arch Riverfront Dewatering (MO)

- Drill dewatering wells and pump incoming flood water at a rate that would allow for train traffic to continue operation in a flood that reached up to 45 feet on the St. Louis Gage.



Estimated Cost: \$8 mil