



# 2024 Multimodal Transportation Priority Projects List

## ST LOUIS REGIONAL FREIGHTWAY

### Advanced to Construction



**Merchants Bridge (TRRA) Replacement over the Mississippi River (MO-IL)**  
Replacement of Terminal Railroad Association of St. Louis' rail bridge that dates back to 1890

*Freightway's #1 Priority*



*Construction completed*  
**Estimated Cost: \$222M**



**Union Pacific Railroad Lenox Tower Replacement (IL)**  
Remove Lenox Rail Tower in Mitchell, Illinois in order to centralize dispatching in Omaha, Nebraska



*Construction completed*  
**Estimated Cost: \$10.1M**



**North Park Access Improvements (MO)**  
Safety and capacity improvements along Hanley Road from I-70 to Madison Avenue



*Construction Completed*  
**Estimated Cost: \$3M**



**Earth City Access Improvements (MO)**  
(A) St. Charles Rock Road preservation of 1.3-mile corridor  
(B) Arterial roadway pavement repairs in Earth City



*Construction Completed*  
**Estimated Cost: \$4.1M**



**J.S. McDonnell Connector Access Improvements (MO)**  
Roadway improvements to enhance truck traffic movements and replace deteriorated rail crossing



*Construction Completed*  
**Estimated Cost: \$2.4M**



**MacArthur Bridge Improvements over the Mississippi River**  
Replace truss over UP Railroad, steel repair and replacement of some existing rail track



*Funded in 2023*  
**Estimated Cost: \$57.6M**



**Illinois Route 3 Connector (IL)**  
New alignment between IL Rte 3 and IL Rte 203 to improve mobility and connectivity



**Estimated Cost: \$104M**

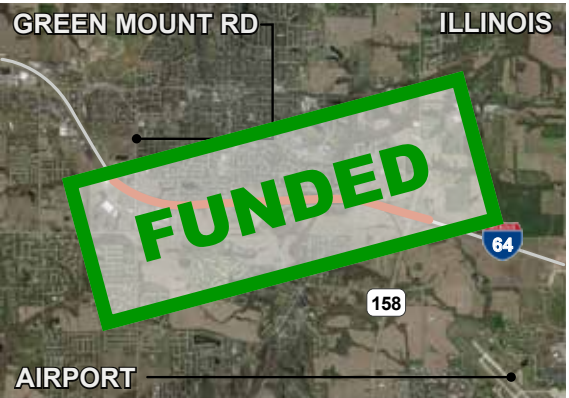


**I-255 / Davis Street Ferry Road Interchange (IL)**  
New interchange and connecting roadways to serve emerging industrial area near Union Pacific Dupo Intermodal Yard including future grade separation over five rail tracks

*Highest Priority Project*



*Funded: Summer 2019*  
**Estimated Cost: \$61.3M**



**I-64 Improvements from Green Mount Road to Illinois Route 158 (Air Mobility Drive) (IL)**  
Relocation of I-64 to six lanes as well as other safety and capacity improvements



*Funded: Summer 2019*  
**Estimated Cost: \$36M**



**Illinois Route 158 (Air Mobility Drive) Relocation from Route 161 to Route 177 (IL)**  
One-mile extension of two lanes along a growth corridor near I-64 and MidAmerica St. Louis Airport



*Funded in 2019*  
**Estimated Cost: \$26M**





# 2024 Multimodal Transportation Priority Projects List

## ST LOUIS REGIONAL FREIGHTWAY

### Advanced to Construction



**I-55 Improvements from Route Z to U.S. Route 67 (MO)**  
Pavement and bridge rehabilitation, increased capacity by expanding to a six-lane highway for approximately six miles from Route Z to U.S. Route 67, and interchange improvements



**Estimated Cost: \$233M**

### Partially Programmed for Construction



**North Riverfront Commerce Corridor Improvements (MO)**  
(A) Hall Street and Riverview Drive improvements (*Partially Funded*)  
(B) Banach Street improvements  
(C) I-70 westbound off-ramp to North Broadway relocation (*Complete*)



**Highest Priority Project**

**Estimated Cost: \$34M**  
**Unfunded: \$15.2M**



**Illinois Rte. 3 Access Improvements (IL)**  
(A) Construction of four lanes from River Park Connector to Monsanto Ave. (*Funded*)  
(B) Illinois Rte. 3 Railroad Bypass along Falling Springs Rd (*Partially Funded 2015, 2018 and 2023*)

**Highest Priority Project**



**Estimated Cost: \$325.5M**  
**Unfunded: \$29M**



**America's Central Port Intermodal Improvements (IL)**  
(A) Granite City Harbor Lead Track Revitalization (*Funded*)  
(B) Red Dock Rail Expansion (*Not Funded*)  
(C) New Port Entrance at Illinois Route 3 (*Funded*)  
(D) Rail Center (Phase I) (*Not Funded*)  
(E) Granite City Harbor Improvements (former US Steel Dock) (*Funded*)



**Estimated Cost: \$371.2M**  
**Unfunded: \$353.2M**



**I-55/70 Lane Additions from I-255 to I-270 (IL)**  
Proposed project would extend six lanes starting at I-255



**Estimated Cost: \$400M**  
**Unfunded \$387.5M**



**I-270 Improvements from I-70 (MO) to Illinois Route 157 (MO-IL)**  
• I-270 from James S. McDonnell Blvd. to Bellefontaine Rd. (MO) \$278M (*Funded*)  
• I-270 corridor improvements from Rte. 367 (Bellefontaine Rd.) to west of Rte. H (Riverview Dr.) (MO) \$42M (FY26) (*Funded*)  
• I-270 Mississippi River Chain of Rocks Bridge Replacement and 6 lanes from the Mississippi River Bridge to the Chain of Rocks Canal on the Illinois side (MO/IL) \$496M (*Funded*)  
• Chain of Rocks Canal in Granite City to .1 mile E. of St. Thomas Rd - Interchange Reconstruction and add lanes (IDOT): \$68.9M (*Funded*)  
• IL Rte 3 in Granite City and St. Thomas Rd - Bridge Replacement (IDOT): \$33M (*Funded*)  
• St. Thomas Rd to IL 111 (IDOT): UNFUNDED Approximate Cost \$325M and \$3M for Engineering (*Funded*)  
• .2 mile E. of IL 111 in Pontoon Beach to .5 mile E of I-55/70 - Bridge repair and ramp replacement (IDOT): \$86.7M (*Funded*)  
• IL 111 at CORS Rd in Pontoon Beach intersection Reconstruction (IDOT): \$20.5M (*Funded*)

**Highest Priority Project**



**Estimated Cost: \$1.35B**  
**Unfunded: \$322M**



**I-70 Improvements from Wentzville to Stan Musial Veterans Memorial Bridge (MO)**  
• I-70 Wentzville Parkway to Warren County capacity to be added and bottle neck improvements from Wentzville Parkway to Rte. Z to be addressed - \$248M (*Funded*)  
• I-70/I-64 Interchange Improvements \$133M - (*Partially Funded*)  
• I-70 Interchange Outer Rd., and Mainline Improvements from Bryan Rd. to Zumbuhl Rd. \$74M (*Not Funded*)  
• I-70 Improvements from Fairgrounds Rd. to Cave Springs Rd. \$62M - (*Funded*)  
• I-70 Improvements from Missouri River to North Hanley Rd. (Tier 1 and 2\*) \$178M (*Not Funded*)  
• I-70 St. Louis City Limit to Benton St. interchange reconfiguration and safety enhancements \$168M (Tier 2\*) (*Not Funded*)  
• Partnership between Kansas City and the St. Louis region highlights the importance of reconstructing and adding capacity to Missouri's statewide I-70 corridor \$2.8B\*\* (*Funded*)

**Highest Priority Project**



**Estimated Cost: \$863M**  
**Unfunded: \$460M**

<sup>4</sup> Identified as high priority sections 2021  
\*Tier level of MoDOT's high priority unfunded transportation needs  
\*\*\$2.8B for I-70 isn't included in our totals as much of the investment would be outside of the St. Louis region  
FW220493 | August 2023





# 2024 Multimodal Transportation Priority Projects List

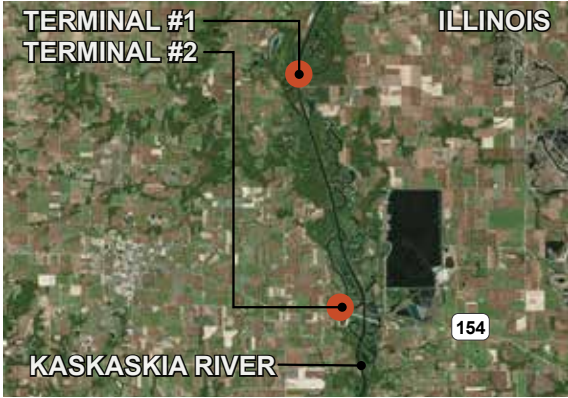
## ST LOUIS REGIONAL FREIGHTWAY

### Partially Programmed for Construction



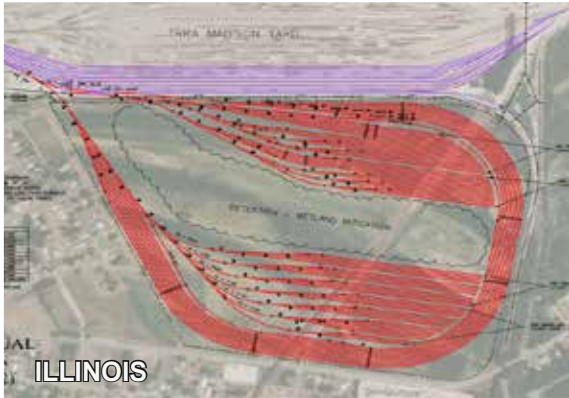
**Mississippi River Port Development Projects (MO)**  
(A) Jefferson County Port Development projects with access roadway *(Partially Funded)*  
(B) St. Louis City Municipal River Terminal Upgrades *(Funded)*  
(C) St. Louis County Port development north/south sites

**Estimated Cost: \$72.3M**



**Kaskaskia Regional Port District Improvements (IL)**  
(A) Terminal #1 second rail loop track and lead track rail upgrades – *(Funded)*  
(B) Terminal #2 2nd entrance & 3rd dock *(Partially Funded)*  
(C) Port Development at Fayetteville *(Cost TBD)*

**Estimated Cost: \$45.5M**



**Madison Yard and Rail Improvements in St. Clair County (IL)**  
(A) 1,500 railcar expansion serving inland port, railroad and trucking freight terminals.  
(B) New 3rd Main Railroad Track. *(Funded)*  
Positively affects travel times for Amtrak by reducing delays from blocked main lines due to yarding today's larger freight trains.

**Estimated Cost: \$98M**



**St. Louis Lambert International Airport North Cargo Improvements (MO)**  
(A) Banshee Road reconstruction *(Partially Funded)*  
(B) Taxiway V connector *(Complete)*

**Estimated Cost: \$17.5M**  
**Unfunded: \$10.3M**

### Concept Development or Planning



**St. Louis Lambert International Airport Access Improvements (MO)**  
(A) Cargo City access analysis  
(B) Fee Fee Road bridge improvement  
(C) Gist Road upgrade

**Estimated Cost: \$37.5M**



**I-255 / Fish Lake (Ramsey Road) Interchange (IL)**  
New interchange to provide additional access to the Union Pacific Dupo Intermodal Yard

**Estimated Cost: \$27M**



**MidAmerica St. Louis Airport Distribution Improvements (IL)**  
New two-mile rail spur from Norfolk Southern mainline to enable freight rail access for industry on the eastern side of airport

**Estimated Cost: \$45M**



**New Terminal for St. Louis Lambert International Airport (MO)**  
Proposed project would replace two existing unconnected terminals with a single linear terminal better suited to meet current and future growth.

**Estimated Cost: \$2.8B**



**Terminal Railroad Association of St. Louis (TRRA) Tunnel-Arch Riverfront Dewatering (MO)**  
Drill dewatering wells and pump incoming flood water at a rate that would allow for train traffic to continue operation in a flood that reached up to 45 feet on the St. Louis Gage.

**Estimated Cost: \$8.8M**